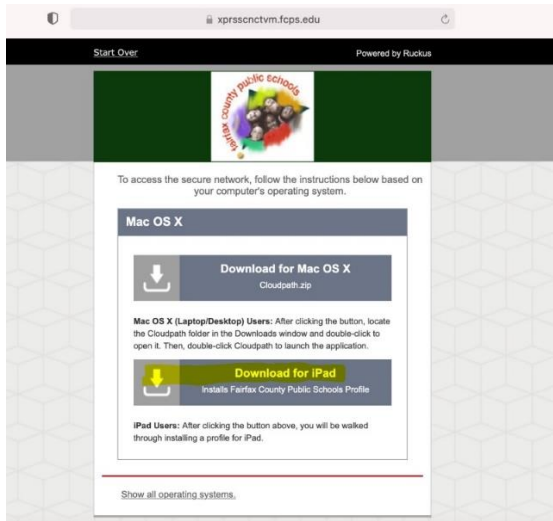


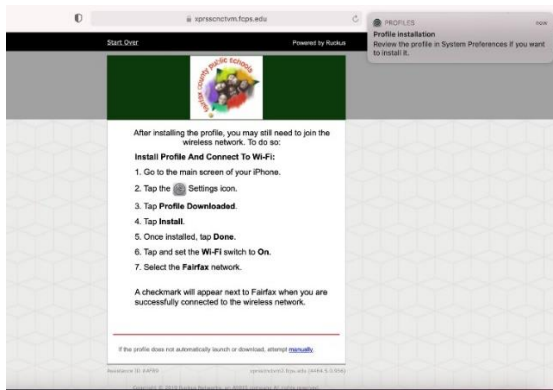
# Mac OS Enrollment using Mobileconfig file

Start onboarding process as normal. When you get to the screen below.

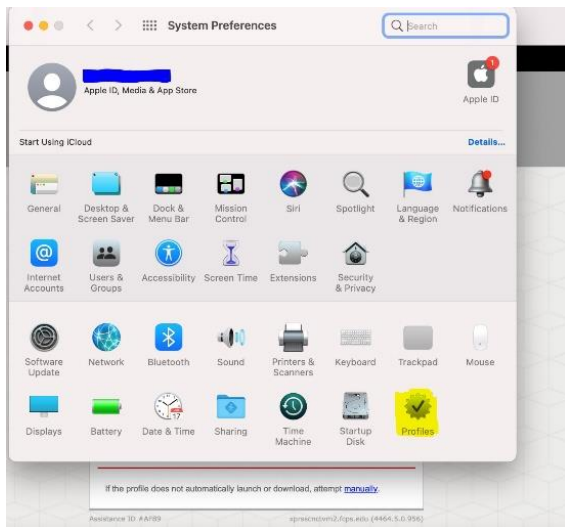
Select Download for iPad



Will show profile was downloaded to System Preferences.



Open System Preferences. Select Profiles icon

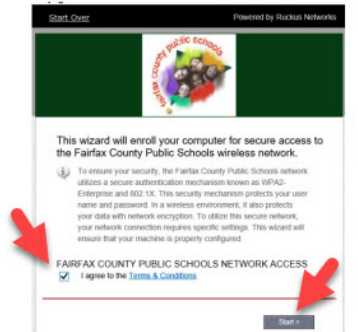


- Onboarding Process -  
Connect to the "FCPSonboard" network on your computer:

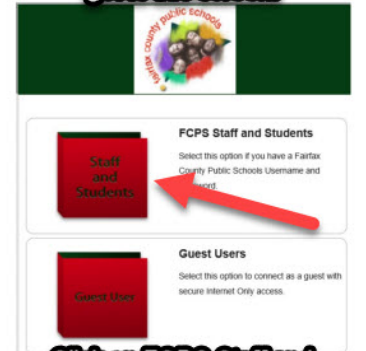


Once connected to FCPSonboard, open Safari or Chrome.

In the address bar, type 1.1.1.1 and hit enter. This screen should pop up:



Click the box and then Start to get to this screen:

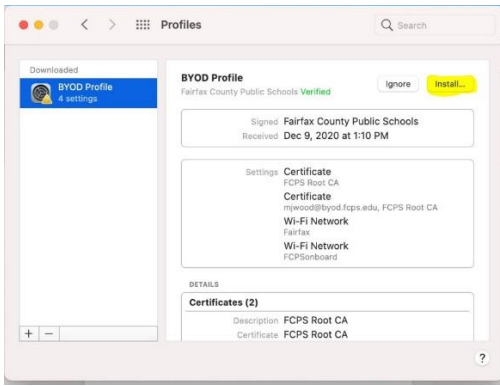


Click on FCPS Staff and Students.

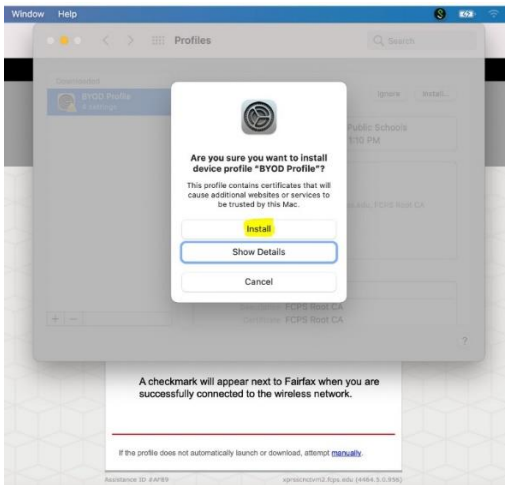


Enter your student ID and your regular password. Follow remaining steps to the left.

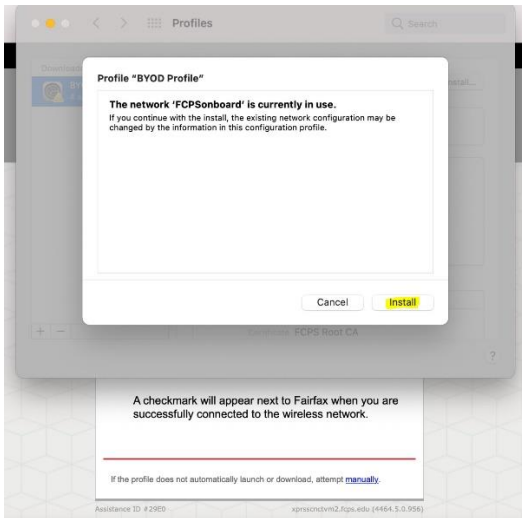
Highlight the profile that just download and click install.



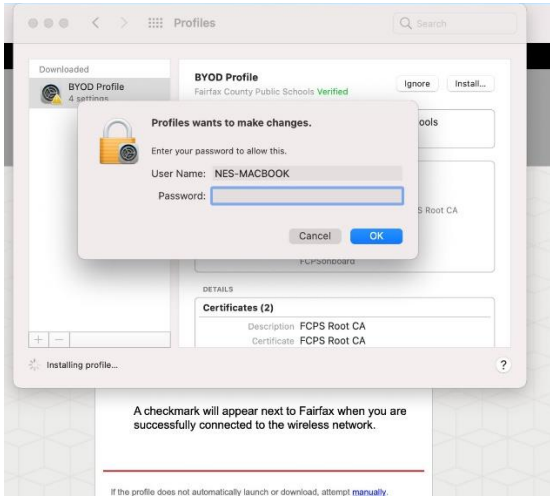
Will ask if you are sure, select install.



Will give message about FCPSonboard in use, click Install.



Will prompt you for computer password to allow installation of profile. Enter password and click OK



Profile will install and on completion wireless will automatically connect to Fairfax SSID.

Setup complete...

