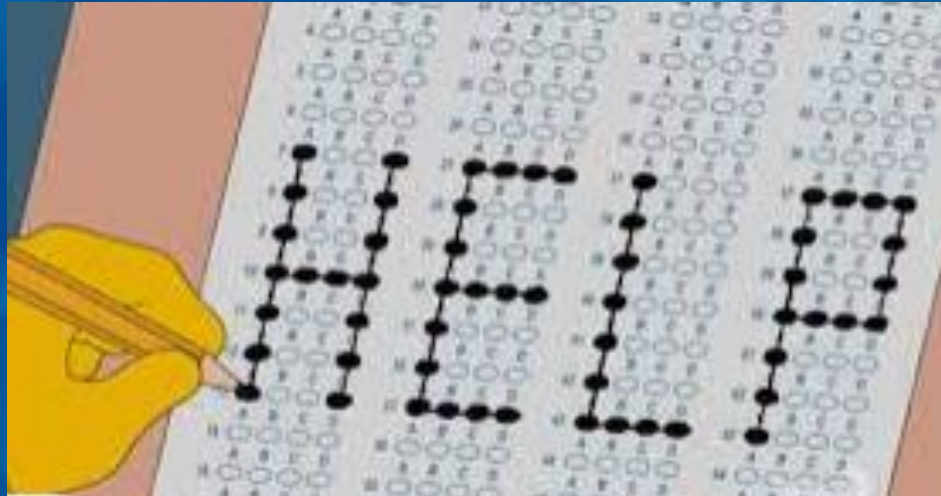


# GCM College Testing Info Night

*12/15/2021*



GEORGE C. MARSHALL  
HIGH SCHOOL



Gardner Humphreys, *College & Career Center Specialist*, GCM

Guest Speaker: Josh Silverman, EDGE ED

[gkhumphreys@fcps.edu](mailto:gkhumphreys@fcps.edu) 703-714-5506

George C. Marshall HS

# What are the Tests



- SAT/PSAT, ACT
- About 3 hours on 1-3 Saturdays
- Some colleges use as a **common yardstick** for admissions, most test-optional during Covid
- Both SAT and ACT accepted by U.S. colleges
- **NOT** an IQ test, predictor of college success, or score of your parenting or studenting skills!!!

GEORGE C. MARSHALL  
HIGH SCHOOL



SMALL SCHOOL  
**BIG**  
H E A R T

# Role in Admissions

- Colleges say grades and strength of schedule are #1
- Scores are one more **data point**
- "Competitive" scores mean a **range**, not an exact number
- Value can depend on **context**: intended major, geographic region, gender, etc.
- Weigh your time/energy/\$ investment vs. the potential return
- Growth of test optional and self-reporting



GEORGE C. MARSHALL  
HIGH SCHOOL



**BIG**  
H E A R T



# Updates for 2021-22



- **Test Optional** for (most) colleges for Class of 2022 and 2023
  - How to know if optional & should you use?
    - ❖ <https://www.nacacnet.org/news--publications/newsroom/test-optional-means-test-optional/>
- **Adjusting your calendar** for possible rescheduling
- **Declining role** of tests in VA Public College admissions for most majors (even pre-Covid for UVA, W&M, Tech)
- Updates to process: growing use of **self-reporting**, changes to **fee waivers**, etc.

GEORGE C. MARSHALL  
HIGH SCHOOL



SMALL SCHOOL  
**BIG**  
H E A R T

# PSAT (Practice) Tests at GCM

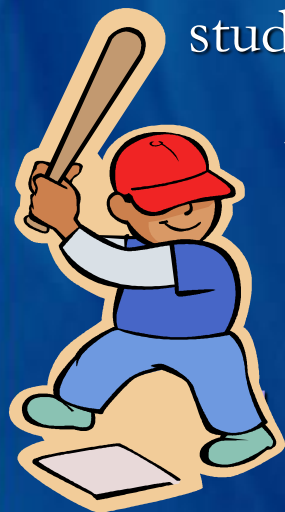


At GCM:

- 2021-22: 10 & 11<sup>th</sup> Grade PSAT scores posted
- PSAT in FCPS every year for 10<sup>th</sup> and 11<sup>th</sup> grades in school. Watch for late September/early October emails from school and FCPS
- College Board emails with link to scores went out to students 12/6 to personal emails. If can't login, email me. Then try:

<https://pages.collegeboard.org/account-help>

Help Line: 1-866-315-6068

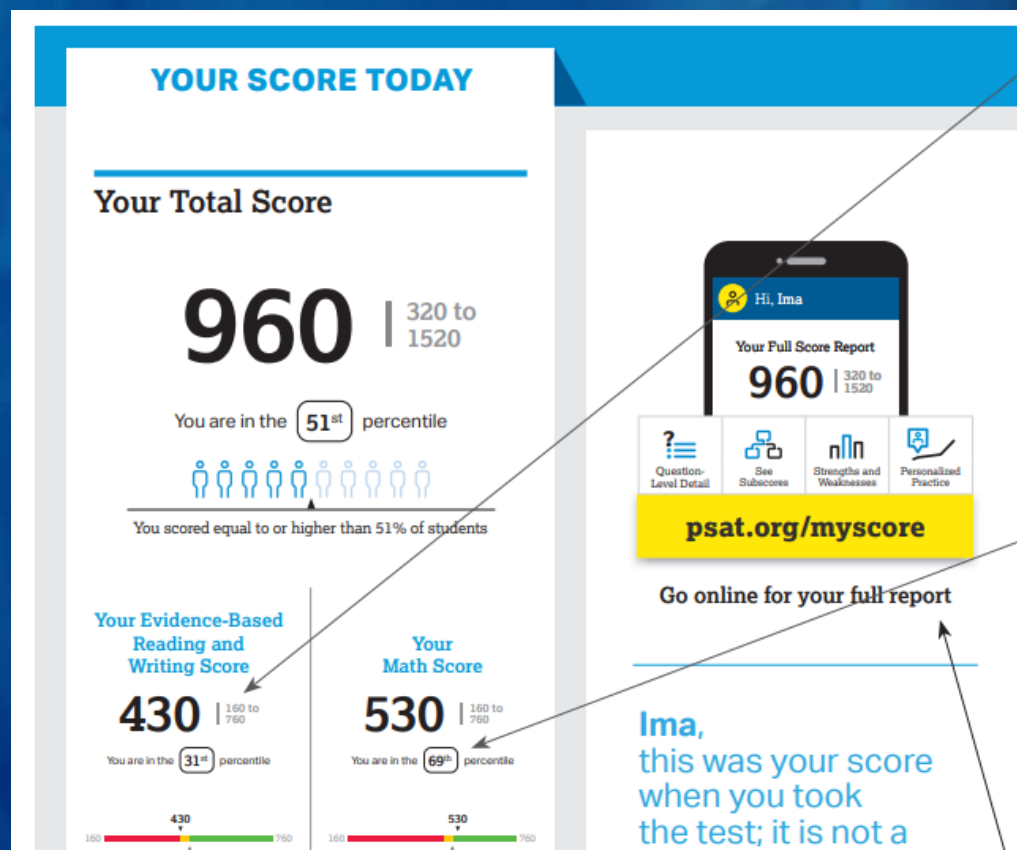


GEORGE C. MARSHALL  
HIGH SCHOOL



# Understanding Your PSAT

<https://collegereadiness.collegeboard.org/psat-nmsqt-psat-10>



GEORGE C. MARSHALL  
HIGH SCHOOL







# Make a Plan

1. What **level of scores** are my goal?
  - ✓ use Naviance, college visit notes, other info
2. **Which** tests are best?
3. Focus on **low sections**
4. Try ACT and SAT
5. Make a **calendar**
6. Try **different** prep methods, strategies



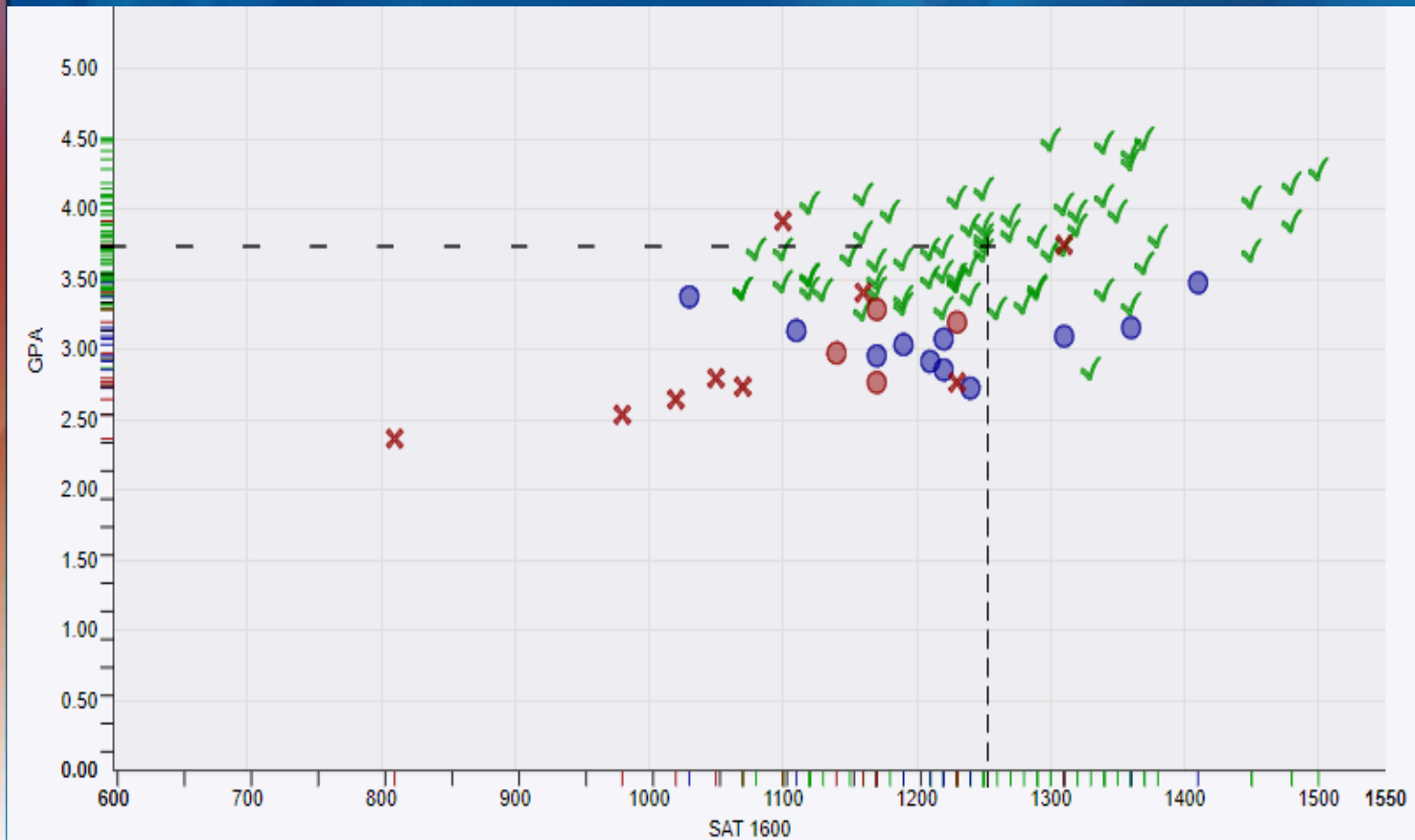
GEORGE C. MARSHALL  
HIGH SCHOOL



SMALL SCHOOL  
**BIG**  
H E A R T

# Naviance Research

- Research colleges and see if scores make a difference for students having similar grades
  - ✓ See if green checks range a lot from left to right





# GCM Library Test Prep

- Students login with FCPL database password on *GCM library site* (they know what that means)

<https://www.gcmhslibrary.com/college-and-career/>



The screenshot shows the website for the Testing & Education Reference Center. The header includes the site's name and a navigation bar with links to Home, High School Tools, College Prep Tools, Career Tools, Grad School Tools, and International Tools. The main content area features a large image of a smiling young woman and a man, with the heading 'Plan, Prepare and Pay for College'. Below the heading, text encourages students to practice for the SAT, PSAT, and ACT, use scholarship and college search tools, and gain college credit through CLEP and DSST exams. A 'View Tools' link is provided at the end of the text.

**Testing & Education**  
Reference Center

Home High School Tools College Prep Tools Career Tools Grad School Tools International Tools

## Plan, Prepare and Pay for College

Practice for the SAT, PSAT, and ACT and use our scholarship and college search to assist you in getting into the college of your dreams. Then gain college credit for what you already know by preparing for the CLEP and DSST exams. [View Tools](#)

GEORGE C. MARSHALL  
HIGH SCHOOL



# GCM Ranges pre-Covid

## SAT Middle 50%

- Math 520-670
- Reading 520-660
- Combined 1050-1320

*(Not this kind)*



SAT Subject Tests (more used at very competitive schools pre-Covid):

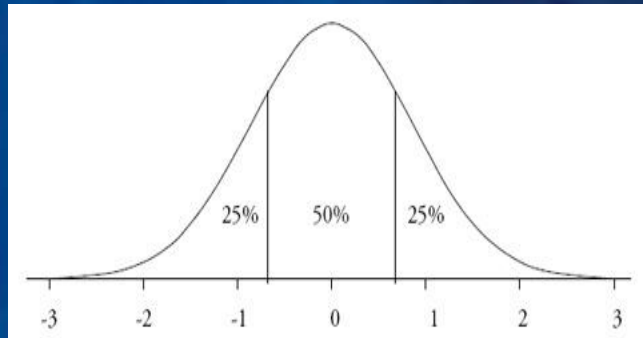
*Consider:* Math II, Physics, Chemistry, Biology (M), Math I, Literature, US History

ACT ★ *High GPA students showing higher ACT vs. SAT*

- Composite Middle 50% at GCM: 24-29

GEORGE C. MARSHALL  
HIGH SCHOOL





# The Middle 50%

SAT

ACT

■ VCU	980-1190	20-26
■ GMU	1050-1250	23-28
■ UVA	1240-1460	28-32
■ Tufts	1360-1500	30-33

- ✓ Beware Naviance Scattergram test score (and GPA) averages: the specific # is not helpful since colleges use ranges. Look at context: school, region, major, etc.

GEORGE C. MARSHALL  
HIGH SCHOOL







# Merit Aid & Scholarships

Examples:

- ❖ Shepherd U. (WV) - 1100 SAT/3.0 = \$3,000/yr
- ❖ Check **Naviance** for scholarships, plus  
[www.finaid.org](http://www.finaid.org) [www.meritaid.com](http://www.meritaid.com) [www.collegeboard.org](http://www.collegeboard.org)
- ❖ Check with admissions and financial aid sites and offices
- ❖ Scholarship Dates: e.g. *GMU is Nov. 1 !*

GEORGE C. MARSHALL  
HIGH SCHOOL



SMALL SCHOOL  
**BIG**  
H E A R T

# Registering

Students register at:

ACT

[www.actstudent.org](http://www.actstudent.org)

SAT

[www.collegeboard.org](http://www.collegeboard.org)

GEORGE C. MARSHALL  
HIGH SCHOOL



# Registration Steps

1. Pick **dates** carefully
2. Get a **fee waiver** if you qualify
3. Select your **4 FREE** colleges
4. Register online – *locations vary*
5. Use **official** name and address, **personal email**
6. Decide if you want lots of **mail**! Opt-in or out to “Student Search Service” (it’s just advertising)  
(they won’t share SSN, phone # or scores but will share your profile responses unless you opt-out)



GEORGE C. MARSHALL  
HIGH SCHOOL



SMALL SCHOOL  
**BIG**  
H E A R T



# Test Day



- You slept, right? No cramming
- Practice **finding site**, visit the room = less unknowns, more knowns!
- What to bring:
  - *Mobile ticket, ID, calculator, pencils, snack, water*
  - *Full College Board checklist online*

GEORGE C. MARSHALL  
HIGH SCHOOL



# Sending Scores



- Student responsibility
- Use the **4 Free** (up to 9 days after test)
- Sent about 3 weeks after test date and posted online; otherwise about 1 week after you request, colleges take time to process and post to your account
- Most use **SuperScore** for SAT and ACT (they automatically make one score from all your sections across all your test dates and only look at that)
- ***Beware*** of Score Choice and Rush Delivery, most college don't want them used!!
- Reports cost 12\$ per school after free window

GEORGE C. MARSHALL  
HIGH SCHOOL



# Common Questions

- ✓ NCAA Division I eligibility changes, Covid
- ✓ IB test scores not used by U.S. colleges
- ✓ Scores and admission calendar (ED, rolling, deferred, waitlist, etc.)
- ✓ Transferring
- ✓ Community College
- ✓ Schools outside U.S.



GEORGE C. MARSHALL  
HIGH SCHOOL



SMALL SCHOOL  
**BIG**  
H E A R T



# FREE TEST PREP



- [gcmhslibrary.com](http://gcmhslibrary.com) – (ACT & SAT Subject Tests)  
GCM Library\Databases\College & Career\FCPL
- [collegeboard.org/practice](http://collegeboard.org/practice) - with Khan Academy,  
link PSAT/SAT accounts
- [actstudent.org/sampletest](http://actstudent.org/sampletest) – practice questions  
and sample writing prompts and essays
- **FREE study guides and practice tests in Career Center** – When back in person or local library, check  
if from last 2 years, don't use if not

GEORGE C. MARSHALL  
HIGH SCHOOL



**BIG**  
H E A R T

# Test Optional Colleges

- Verify policy with each college
- Pre-Covid they often had requirements in order to qualify (Example: if GPA below 3.5 you may want to submit scores if within their middle 50% range, see Mr. Humphreys)
- List of colleges at [www.fairtest.org](http://www.fairtest.org)

GEORGE C. MARSHALL  
HIGH SCHOOL



**FairTest**

The National Center for Fair and Open Testing

# Q & A



SurveyMonkey:  
<https://www.surveymonkey.com/r/9N9XHJJ>

GEORGE C. MARSHALL  
HIGH SCHOOL

